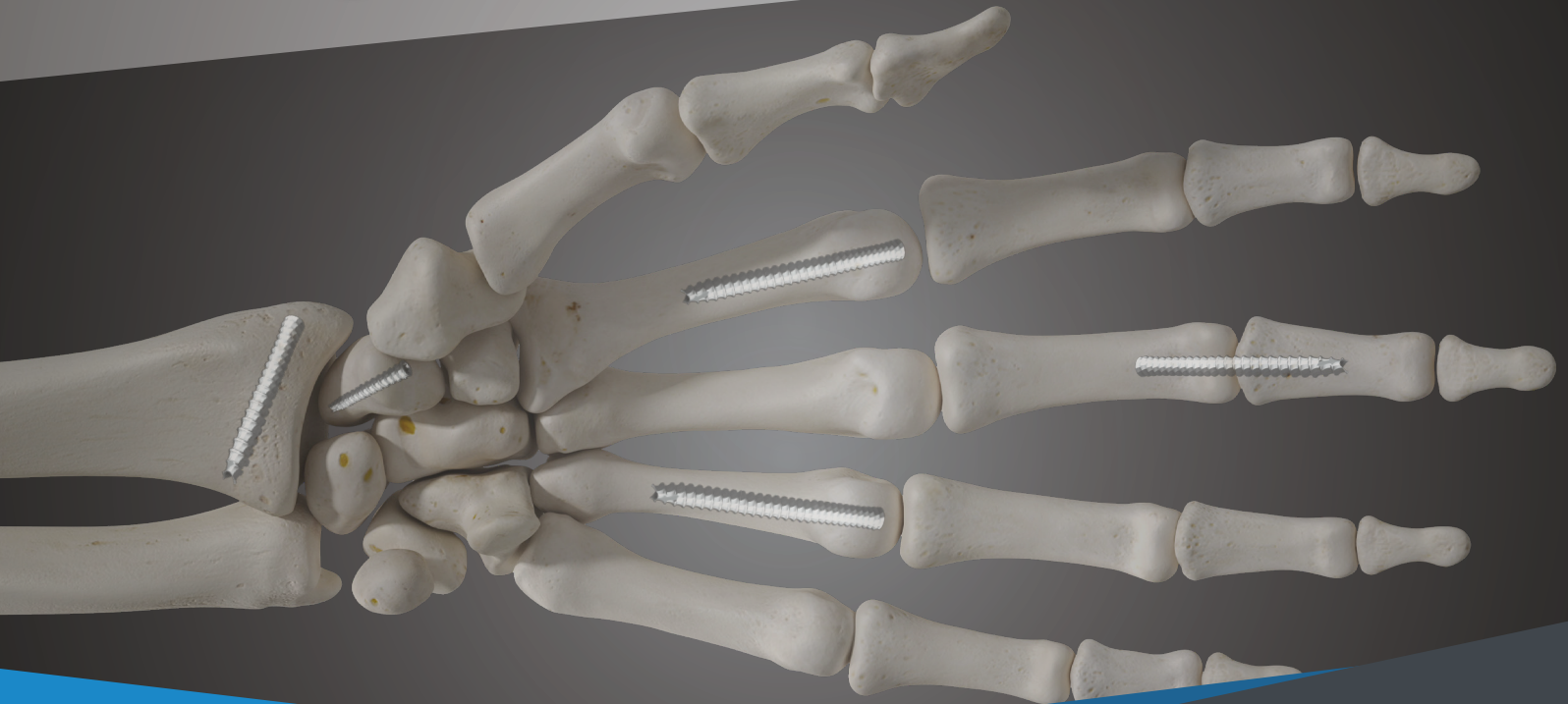
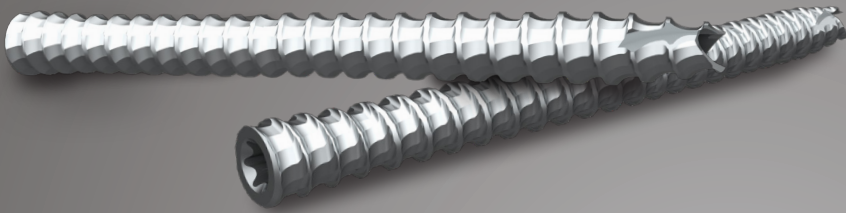


Single-Use Surgical Kit with Faceted Screws

Full Thread, Tapered, Cannulated Headless
Bone Screw & Instruments



The New Fixation Standard in Orthopedics

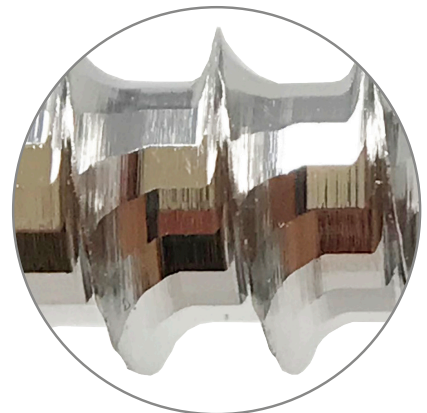
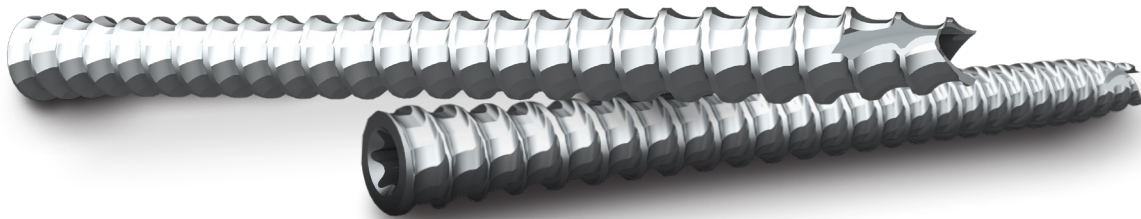
Diamond Orthopedic LLC

PO Box 1470
Belmont, NC 28012
Telephone: (704) 585-8270
www.DiamondOrthopedic.com

REVOLUTIONARY.

Diamond Orthopedic brings you the next generation of orthopedic screws with patented *faceted threadform technology*. This revolutionary surgical solution is single-use packaged with sterile instrumentation kits and state of the art implants.

Diamond Orthopedic is the new fixation standard in orthopedics.



DESIGN MATTERS

Faceted geometry creates higher pullout strength for better fixation and lower insertion torque

CONTENTS

INTRODUCTION

- 6 Single-Use Sterile Kit
- 7 Sizes & Indications

PRODUCT INFORMATION

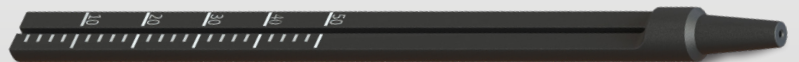
- 8 2.2mm Cannulated Headless Bone Screw
- 10 3.0mm Cannulated Headless Bone Screw
- 12 3.5mm Cannulated Headless Bone Screw
- 14 4.5mm Cannulated Headless Bone Screw

For further information regarding the Diamond Orthopedic product line, visit: www.diamondorthopedic.com

SINGLE USE STERILE KIT

Introducing the Diamond Orthopedic Sterile Kit. Pre-sterilized, for single-use to treat a variety of hand indications. The only sterile kit on the market for use with Diamond Orthopedic's revolutionary faceted threadform technology.

- Single-use instruments
- Individually Boxed
- Double barrier
- Backer card mounted



STERILE PACKED SCREWS

Sizes & Indications

Full Thread, Tapered, Cannulated Headless Bone Screws

Available Screw Sizes

2.2mm	10mm to 40mm
--------------	---------------------

3.0mm	20mm to 50mm
--------------	---------------------

3.5mm	30mm to 60mm
--------------	---------------------

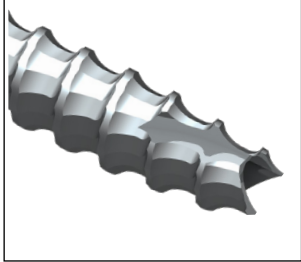
4.5mm	40mm to 70mm
--------------	---------------------

Note: 2.2mm screw increments are 2mm, all others 5mm

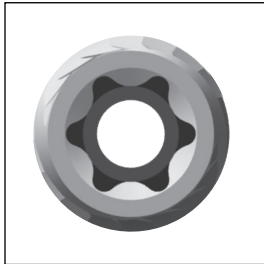
Indication	2.2mm	3.0mm	3.5mm	4.5mm
Arthrodesis				
Intercarpal Joint	●	●		
Distal Interphalangeal Joint (DIJ/DIP)	●	●	●	
Proximal Interphalangeal Joint (PIP/PIJ)	●	●		
Metacarpophalangeal Joint (MCP)	●	●	●	●
Fractures				
Metacarpal	●	●	●	●
Capitellum	●	●		
Proximal Phalanx	●	●		
Scaphoid	●	●		
Non-unions	●	●	●	●

2.2mm Cannulated Headless Bone Screw

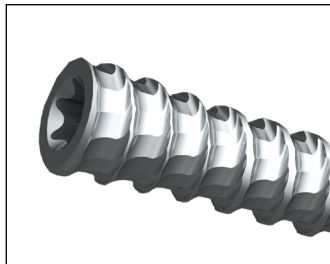
Engineered with Faceted Threadform Technology



Simplified, precise surgical installation



Recessed Torx/hexalobe drive heads for peak torque control and superb engagement



Proximally tapered diameters and variable thread pitch improve purchase and increase stability

- Drill bit for 1.7mm threaded hole
- Available in 316L stainless steel from 10mm – 40 mm

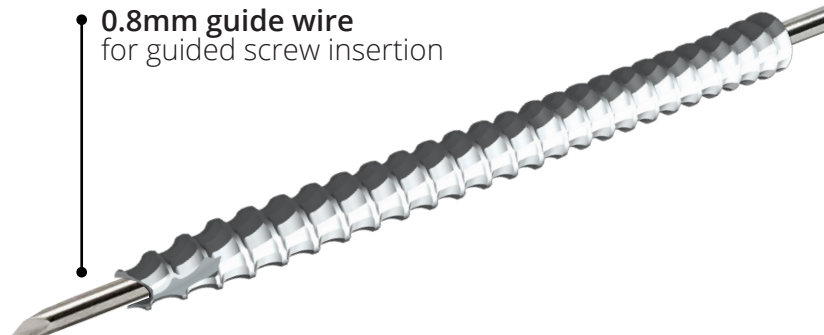
2.5mm head diameter
T5 recessed drive

2.2mm shaft diameter
with 1.0mm Thread pitch

Cancellous thread



0.8mm guide wire
for guided screw insertion



2.2mm Cannulated Headless Bone Screw & Kits

ORDERING INFORMATION

T5 Instrumentation Kit

DMD-KIT-125T05-S



Kit Contents:

- T5 screwdriver
- 1.7mm drill bit
- 125mm depth gauge
- 0.8mm guidewires (2)

2.2mm Cannulated Headless Bone Screws

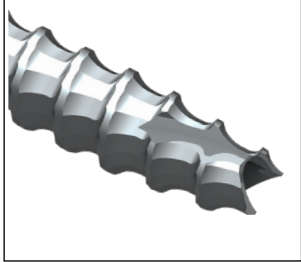


Length	Product Number
10 mm	DMD-TPS-220-010S
12 mm	DMD-TPS-220-012S
14 mm	DMD-TPS-220-014S
16 mm	DMD-TPS-220-016S
18 mm	DMD-TPS-220-018S
20 mm	DMD-TPS-220-020S
22 mm	DMD-TPS-220-022S
24 mm	DMD-TPS-220-024S
26 mm	DMD-TPS-220-026S
28 mm	DMD-TPS-220-028S
30 mm	DMD-TPS-220-030S
32 mm	DMD-TPS-220-032S
34 mm	DMD-TPS-220-034S
36 mm	DMD-TPS-220-036S
38 mm	DMD-TPS-220-038S
40 mm	DMD-TPS-220-040S

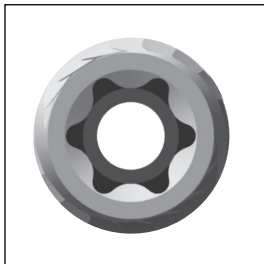
Material: 316L Stainless Steel

3.0mm Cannulated Headless Bone Screw

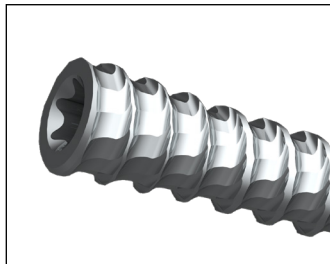
Engineered with Faceted Threadform Technology



Simplified, precise surgical installation



Recessed Torx/hexalobe drive heads for peak torque control and superb engagement



Proximally tapered diameters and variable thread pitch improve purchase and increase stability

- Drill bit for 2.0mm threaded hole
- Available in 316L stainless steel from 30mm – 60 mm

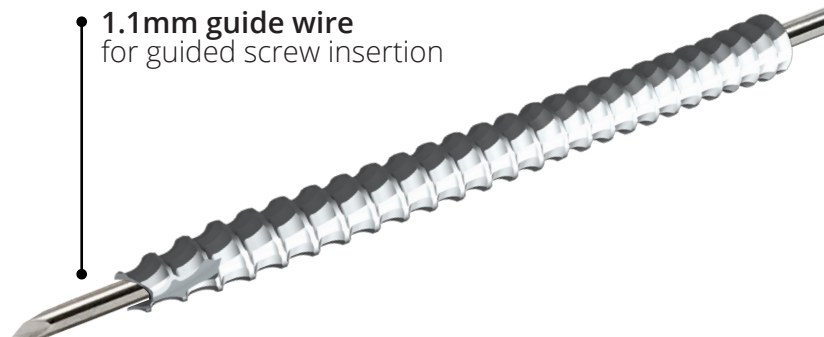
3.4mm head diameter
T10 recessed drive

3.0mm shaft diameter
with 1.2mm Thread pitch

Cancellous thread



1.1mm guide wire
for guided screw insertion



3.0mm Cannulated Headless Bone Screw & Kits

ORDERING INFORMATION

T8 Instrumentation Kit

DMD-KIT-150T08-S



Kit Contents:

- T8 screwdriver
- 2.0mm drill bit
- 150mm depth gauge
- 1.1mm guidewires (2)

3.0mm Cannulated Headless Bone Screws

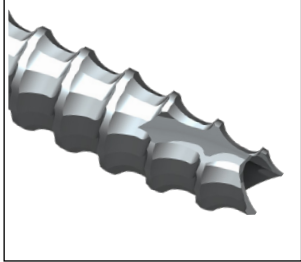


Length	Product Number
20 mm	DMD-TPS-300-030S
25 mm	DMD-TPS-300-035S
30 mm	DMD-TPS-300-040S
35 mm	DMD-TPS-300-045S
40 mm	DMD-TPS-300-050S
45 mm	DMD-TPS-300-055S
50 mm	DMD-TPS-300-060S

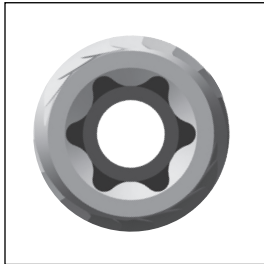
Material: 316L Stainless Steel

3.5mm Cannulated Headless Bone Screw

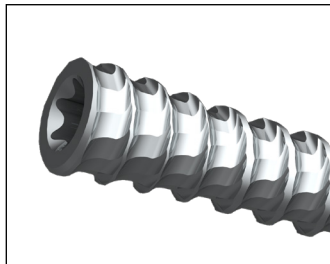
Engineered with Faceted Threadform Technology



Simplified, precise surgical installation



Recessed Torx/hexalobe drive heads for peak torque control and superb engagement



Proximally tapered diameters and variable thread pitch improve purchase and increase stability

- Drill bit for 2.7mm threaded hole
- Available in 316L stainless steel from 30mm – 60 mm

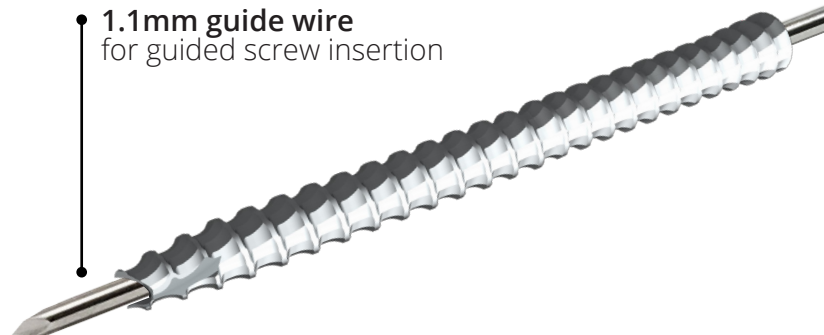
3.9mm head diameter
T10 recessed drive

3.5mm shaft diameter
with 1.25mm Thread pitch

Cancellous thread



1.1mm guide wire
for guided screw insertion

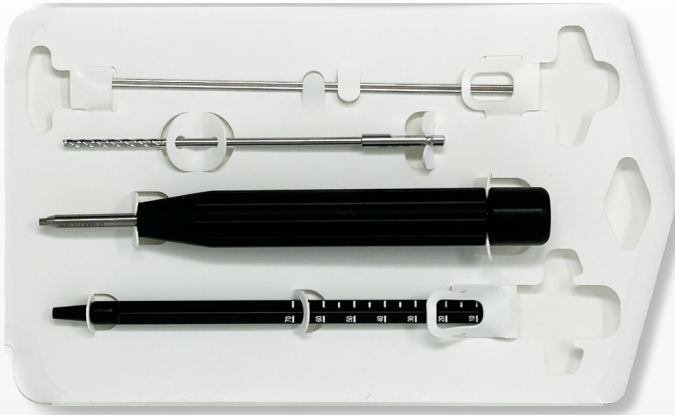


3.5mm Cannulated Headless Bone Screw & Kits

ORDERING INFORMATION

T10 Instrumentation Kit

DMD-KIT-150T110-S



Kit Contents:

- T10 screwdriver
- 2.7mm drill bit
- 150mm depth gauge
- 1.1mm guidewires (2)

3.5mm Cannulated Headless Bone Screws

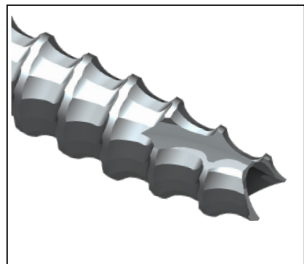


Length	Product Number
30 mm	DMD-TPS-350-030S
35 mm	DMD-TPS-350-035S
40 mm	DMD-TPS-350-040S
45 mm	DMD-TPS-350-045S
50 mm	DMD-TPS-350-050S
55 mm	DMD-TPS-350-055S
60 mm	DMD-TPS-350-060S

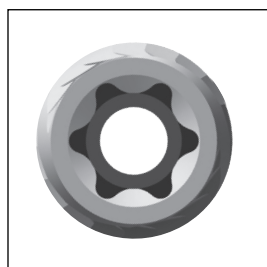
Material: 316L Stainless Steel

4.5mm Cannulated Headless Bone Screw

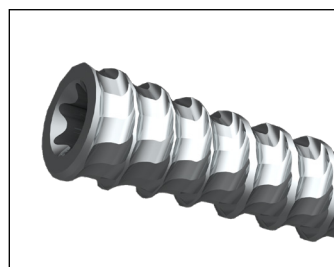
Engineered with Faceted Threadform Technology



Simplified, precise surgical installation



Recessed Torx/hexalobe drive heads for peak torque control and superb engagement



Proximally tapered diameters and variable thread pitch improve purchase and increase stability

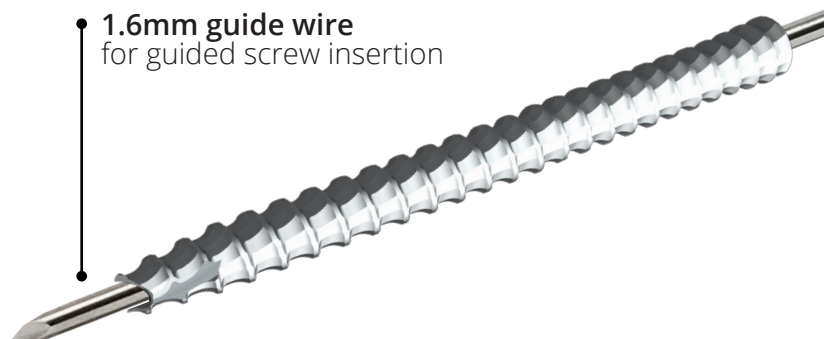
- Drill bit for 3.2mm threaded hole
- Available in 316L stainless steel from 40mm – 70 mm

4.9mm head diameter
T15 recessed drive

4.5mm shaft diameter
with 1.75 Thread pitch

Cancellous thread

1.6mm guide wire
for guided screw insertion

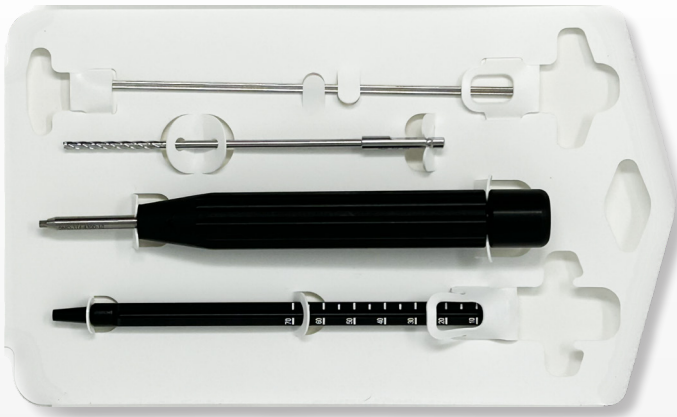


4.5mm Cannulated Headless Bone Screw & Kits

ORDERING INFORMATION

T15 Instrumentation Kit

DMD-KIT-150T15-S



Kit Contents:

- T15 screwdriver
- 3.2mm drill bit
- 150mm depth gauge
- 1.6mm guidewires (2)

4.5mm Cannulated Headless Bone Screws



Length	Product Number
40 mm	DMD-TPS-450-040S
45 mm	DMD-TPS-450-045S
50 mm	DMD-TPS-450-050S
55 mm	DMD-TPS-450-055S
60 mm	DMD-TPS-450-060S
65 mm	DMD-TPS-450-065S
70 mm	DMD-TPS-450-070S

Material: 316L Stainless Steel

Diamond Orthopedic offers
faceted threadform technology for
orthopedic applications worldwide



DIAMOND
ORTHOPEDIC

PO Box 1470
Belmont, NC 28012
704-585-8270
Info@diamondortho.com